

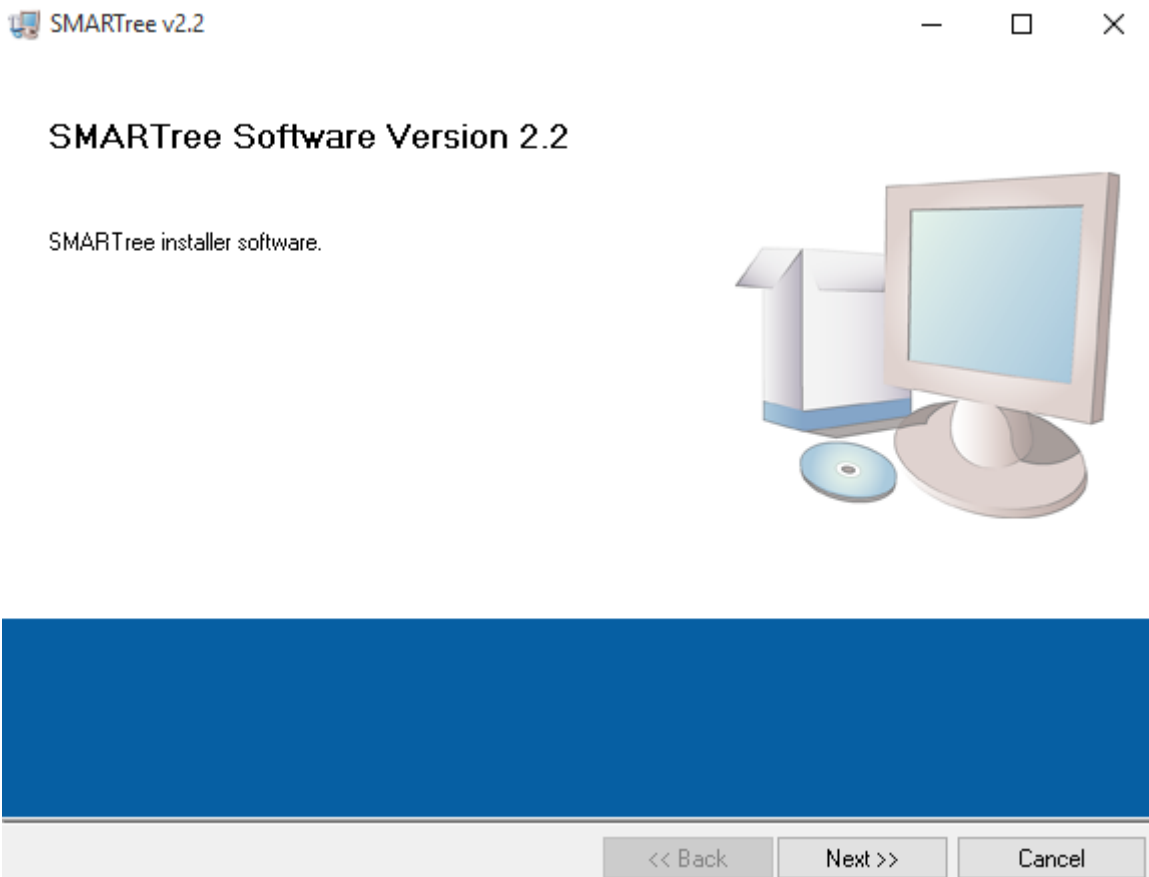
**Watch these YouTube Videos to get started using SMARTree!**

**Installation of GIT Prerequisite is necessary prior to using SMARTree!**

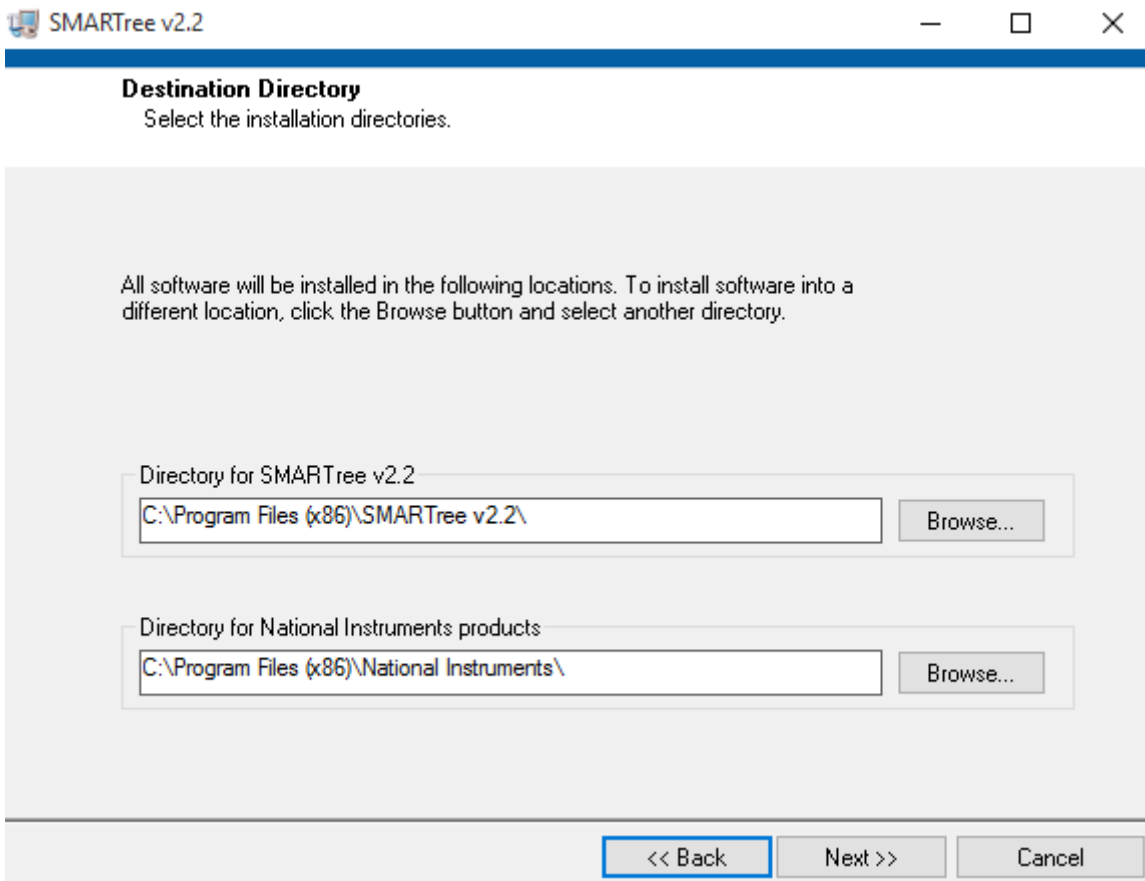
The latest release of SMARTree can be downloaded from the [GitLab Site](#).

Download and double click the zip file to initiate the unzipping process. You can use the windows default “extract” option or other unzip utility such as WinZIP.

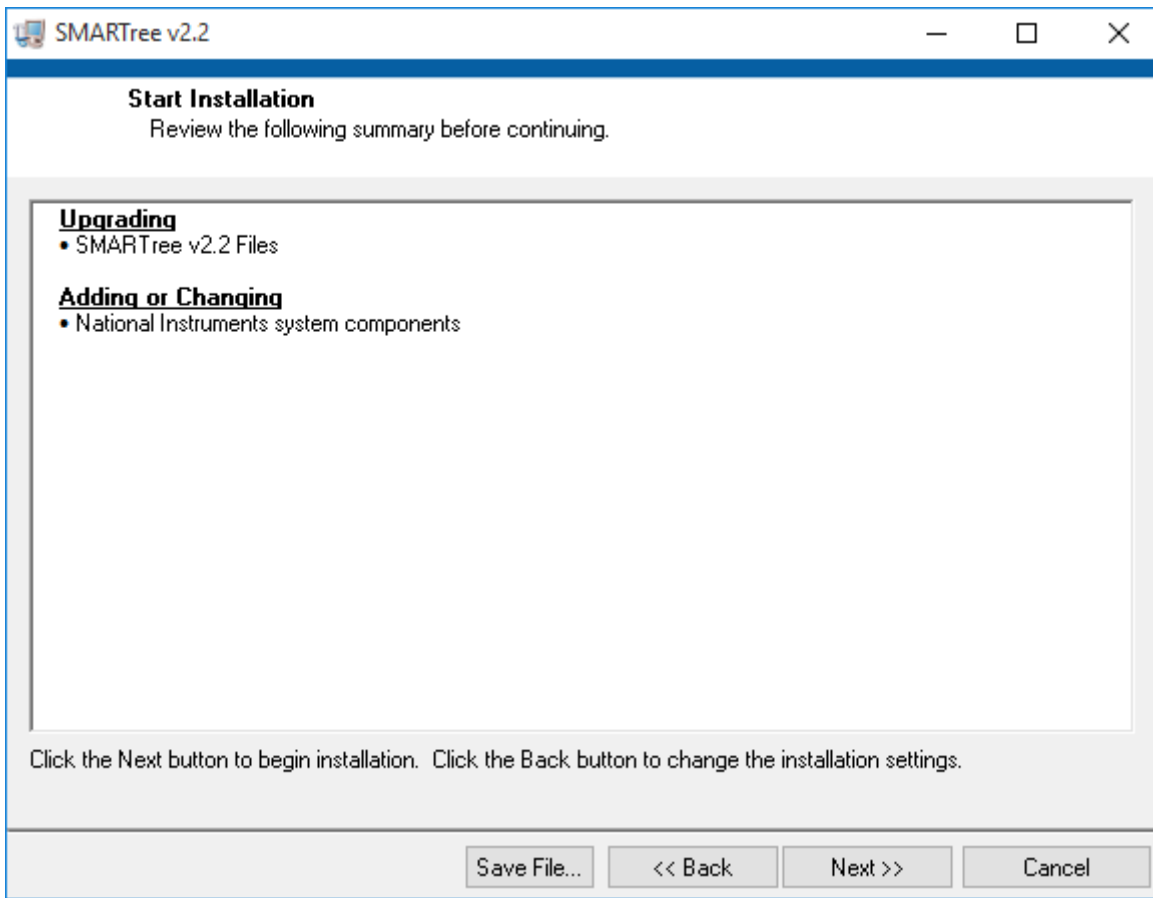
Once unzipped, open the folder that contains the files and double click the “setup.exe” file to begin installation of SMARTree on your PC. The following screen should appear indicating initiation of the installation process. Click Next to continue, or cancel to quit the installation process.



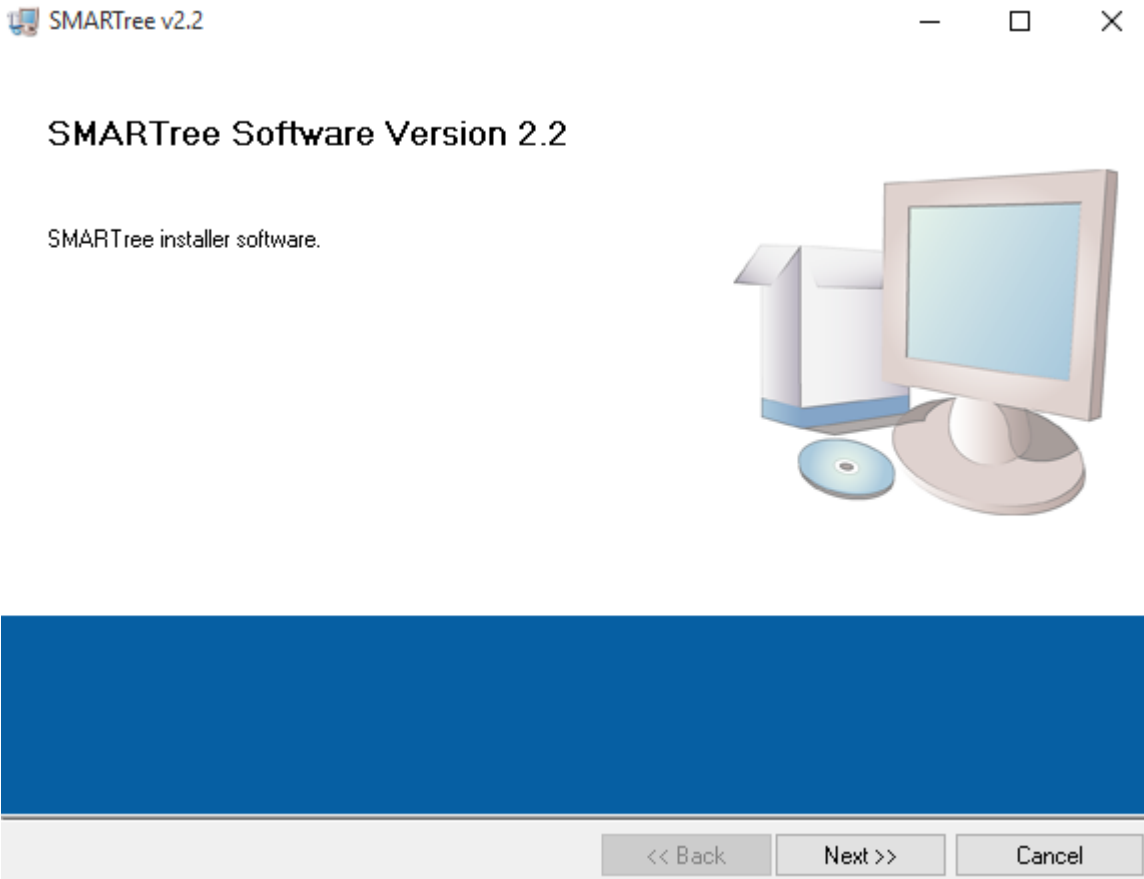
The next screen will ask for destination directories. The default location is C:\Program Files\ and it is recommended that you install the application to this location.



Once you've selected the appropriate folder and hit next, you will see a window reviewing what files will be added during the installation.



Finally a completion window should appear once all files are installed. Click Finish to close this window.



A license key is required to activate the software. To request a license, click the License icon in the View Ribbon. A license request dialog shown below is opened. Fill out the necessary details, click the mail icon to save the form in a folder of your choosing and email this file to [license@smartreesoftware.com](mailto:license@smartreesoftware.com). Select SMARTree standard if you wish to use the base client without additional model or data reduction capabilities. SMARTree Professional includes all features of SMARTree standard with integrated models, image analysis, data reduction as well as other embedded analysis features.

Upon approval, reopen this window, click the Install button and select the license file emailed to you. Once installed you can see the status of the license file in the View ribbon. A window opens as shown below, displaying a tree with a green icons indicating active licenses.

Professional

License Request  
SMARTree Software

Save Install Clear Help Close

Name: John Smith

Company: Boeing

Email: Jsmith@boeing.com

Street: Washington Avs

City: Seattle State: DE

Country: USA

Phone: 456-555-1212 Version: Professional

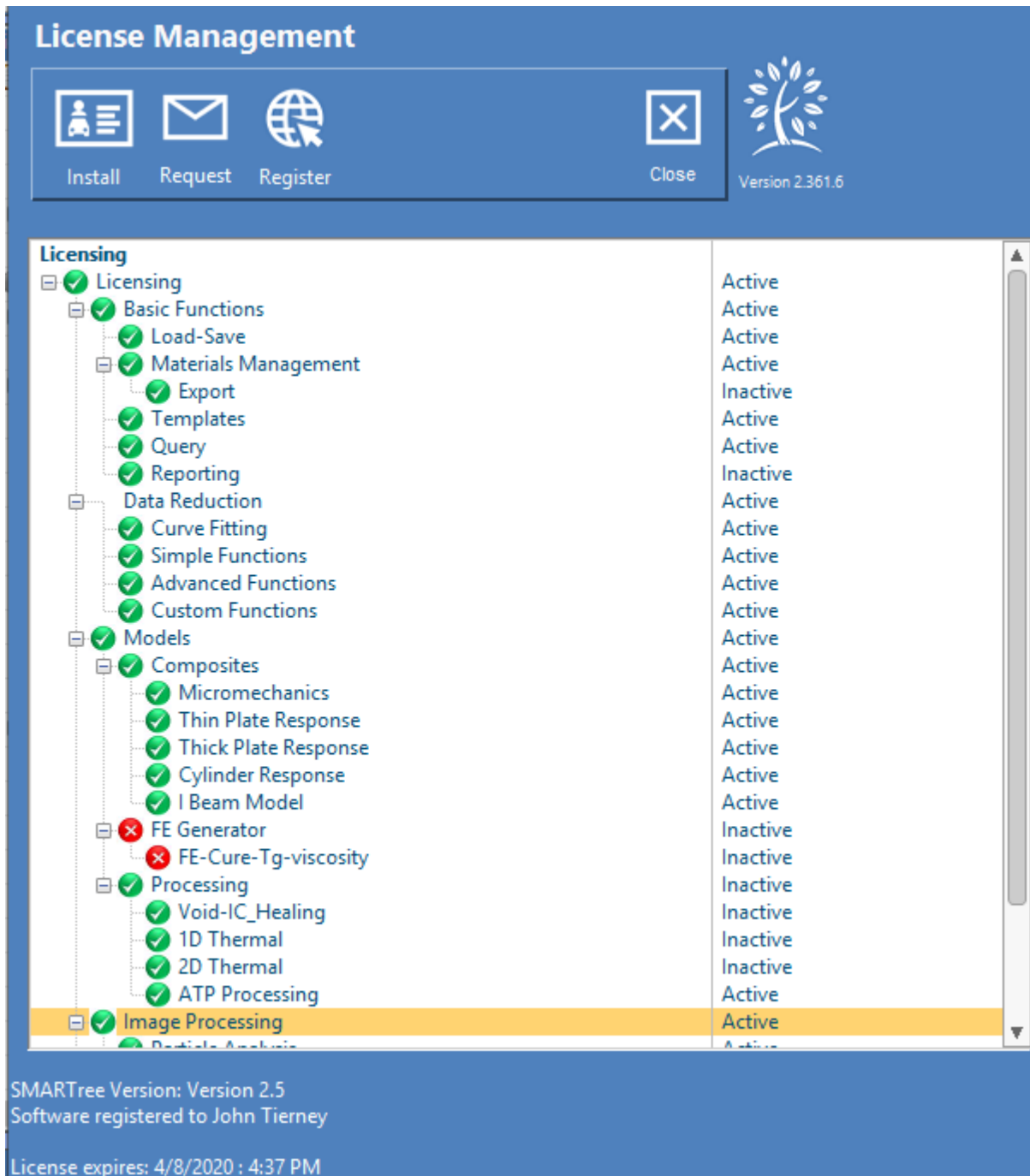
Notes: None

Email this file to [license@smartreesoftware.com](mailto:license@smartreesoftware.com). A keyfile will be sent to you to import. Use the "Install License" option under "Help" to complete activation

**License key request dialog.**







**SMARTree License Window**



